

# Roadway & Safety Improvements at Two Intersections on Broadway Lynn, Massachusetts

Project Update

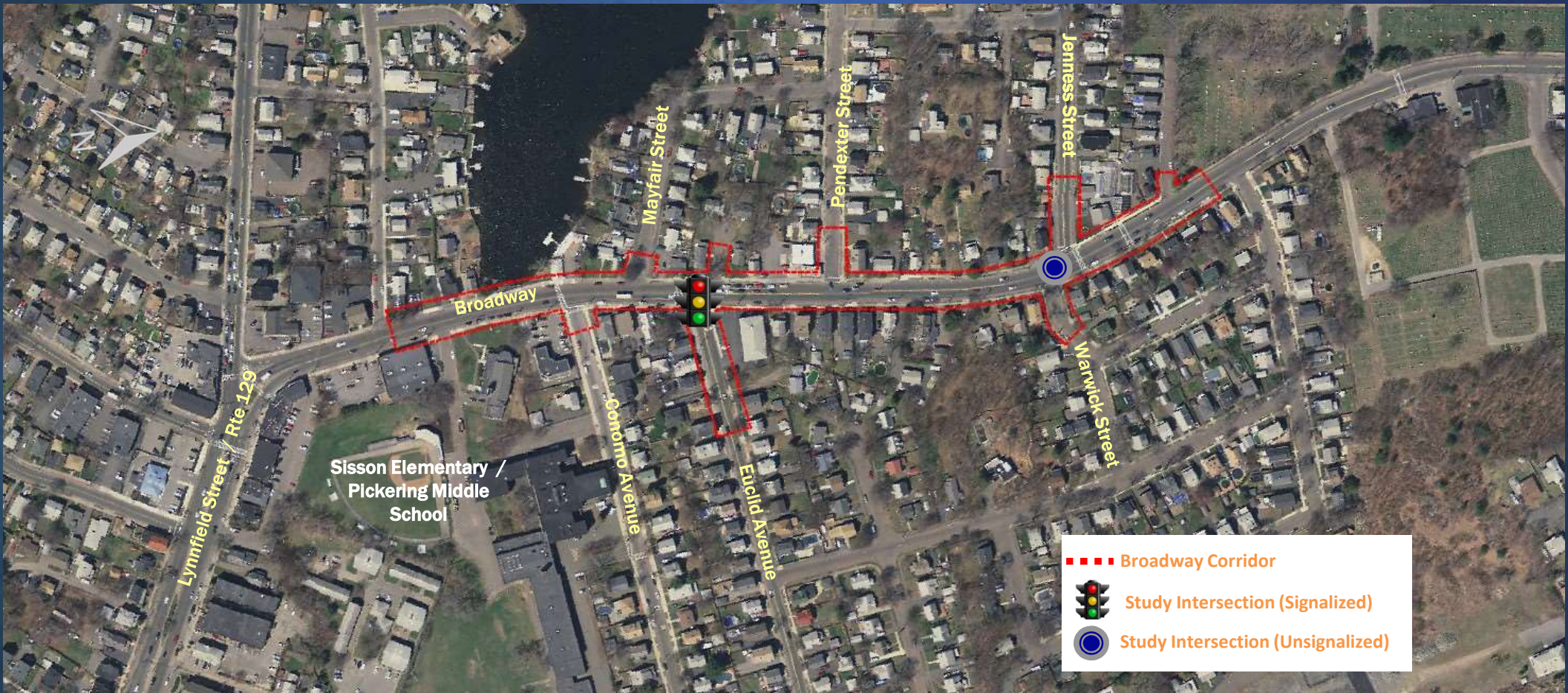
June 26, 2023

# Agenda

- Project Limits/Timelines
- Project Purpose & Need
- Safety
- Current Plan and Cost
- Easements Explanation
- Timeline Going Forward



# Project Limits





# Prior Timelines

- Lynn Design
  - Public Workshop Help on September 18, 2018
  - Road Safety Audit September 2018
- Meetings
  - MassDOT Project Kickoff 7/17/2019
  - Utility Site Walks
  - Design Public Hearing 12/14/2021

# Existing Conditions Assessment

- Safety Concerns
  - Broadway at Euclid Avenue- High Crash Location
  - Broadway at Jenness Street - High Crash Location
  - Wide Lanes = Higher Speeds
- Traffic Operations
  - Broadway Heavily Travelled Roadway
  - Outdated Signal Equipment
  - Adjacent to Sisson Elementary and Pickering Middle Schools
- Fair to Poor Pavement Condition
- Substandard Pedestrian Accommodations
- No Bicycle Accommodations

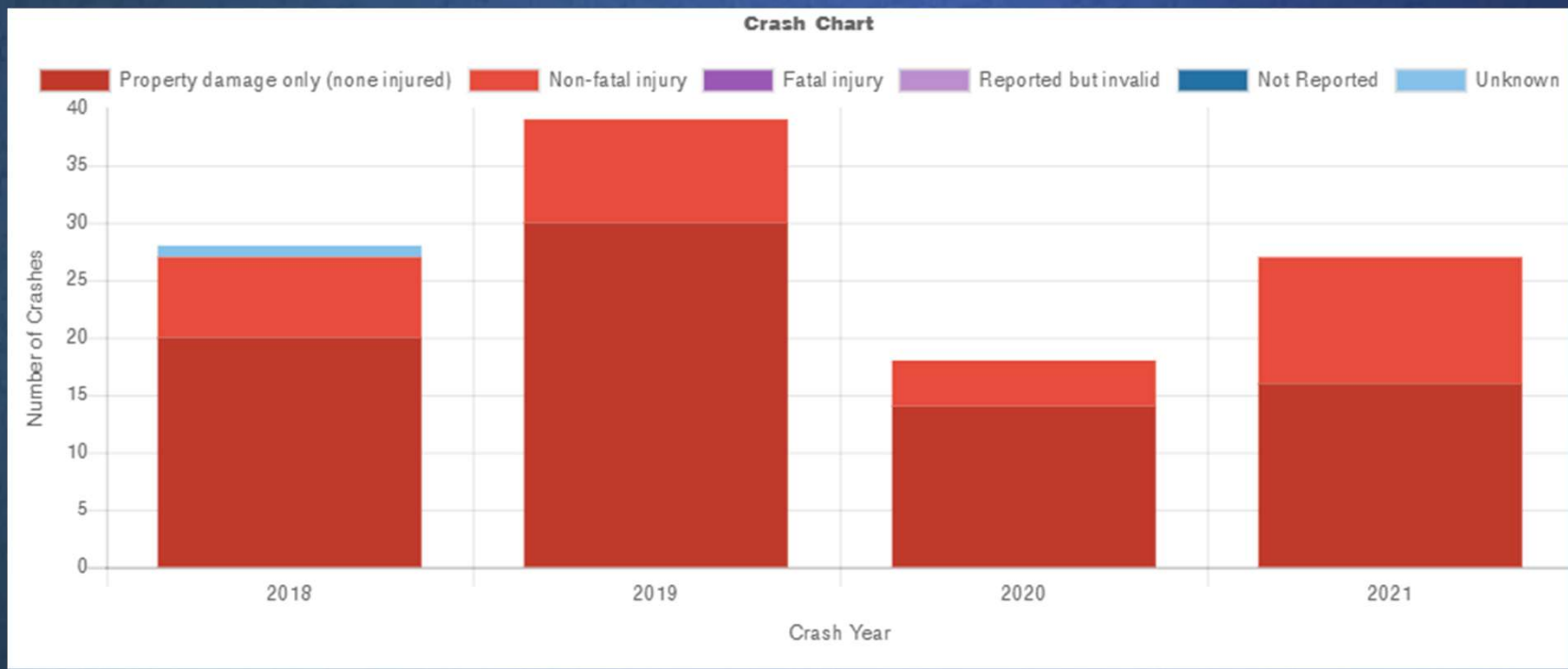
# Safety

- High Crash Locations – Both Broadway at Euclid Avenue Intersection and Broadway/Jenness Street Intersection
- From Road Safety Audit - Project Area averaged **24 crashes PER YEAR**
- Road Safety Audit Conducted in September 2018
- Road Safety Audit Identified Recommended safety improvements.
  - Pedestrian
  - Bicycle
  - Vehicle



# Safety

- Updated Crash Data(2018-2021)
- Averaging 28 Crashes per year
  - 39 Crashes in 2019
  - Fewer crashes in 2020 (Covid)
  - 11 injury crashes in 2021





# Conversation with MassDOT/MBTA

- MBTA Agreed to Consolidate Bus Stops
- MBTA agreed to consolidate stop at Jenness Street with stops further East
- MBTA requests ADA accessibility improvement north of Miller Place – City to Construct Separately
- Relocated crosswalk closer to Bus Stops



# Current Plan – Sheet 1 of 5

LYNN  
BROADWAY

STATE	FED. AID PROJ. NO.	SHEET NO.	TOTAL SHEETS
MA	-	43	82
PROJECT FILE NO. 809254			

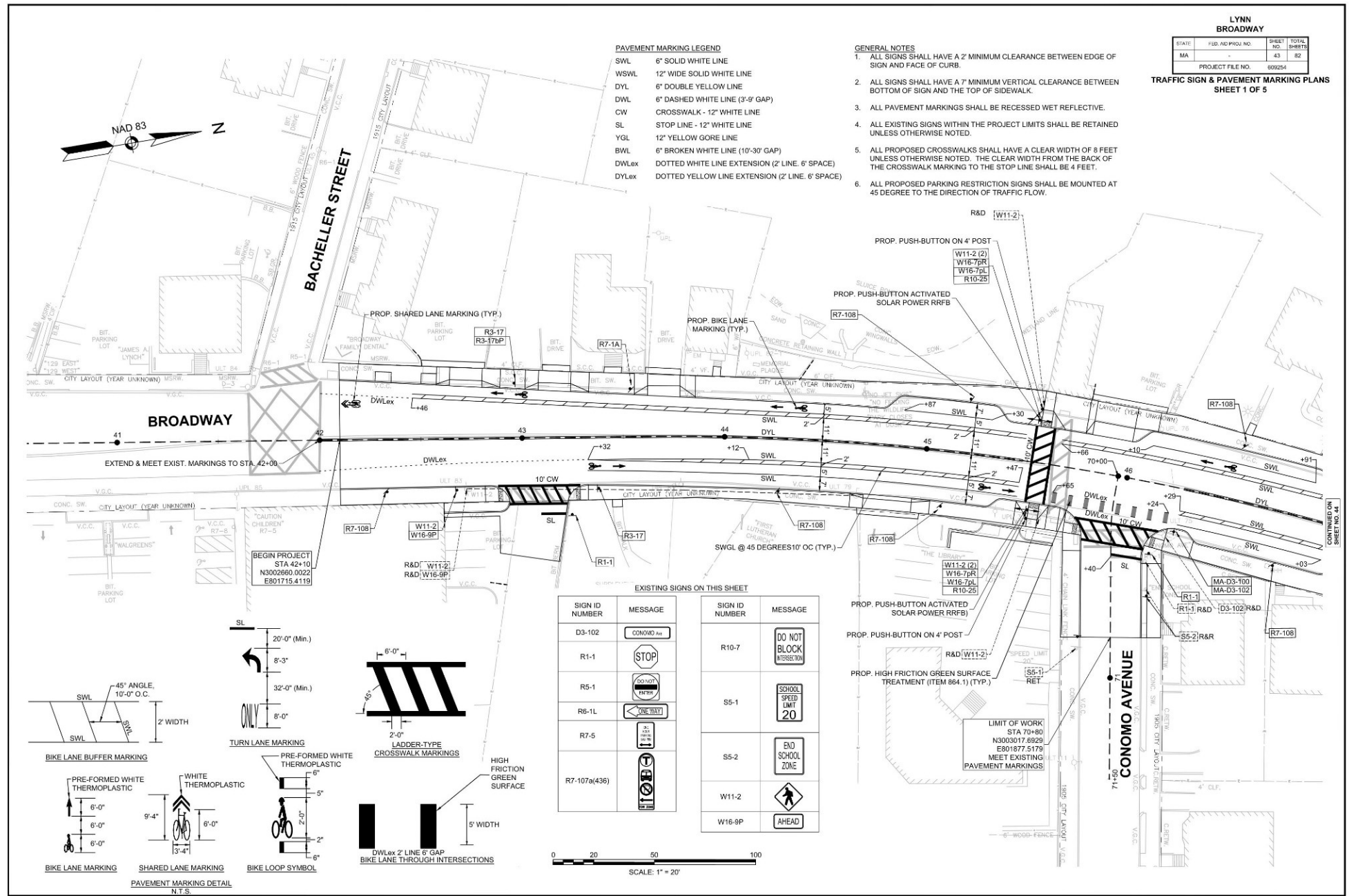
TRAFFIC SIGN & PAVEMENT MARKING PLANS  
SHEET 1 OF 5

PAVEMENT MARKING LEGEND

- SWL 6" SOLID WHITE LINE
- WSWL 12" WIDE SOLID WHITE LINE
- DYL 6" DOUBLE YELLOW LINE
- DW 6" DASHED WHITE LINE (3'-9" GAP)
- CW CROSSWALK - 12" WHITE LINE
- SL STOP LINE - 12" WHITE LINE
- YGL 12" YELLOW GORE LINE
- BWL 6" BROKEN WHITE LINE (10'-30" GAP)
- DWLex DOTTED WHITE LINE EXTENSION (2' LINE, 6' SPACE)
- DYLex DOTTED YELLOW LINE EXTENSION (2' LINE, 6' SPACE)

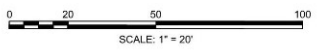
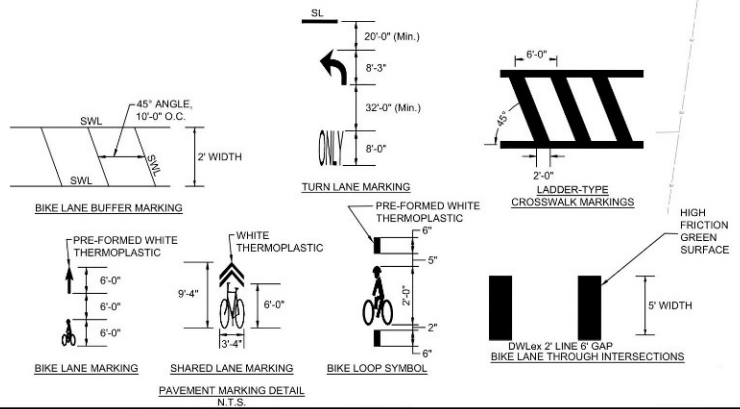
GENERAL NOTES

1. ALL SIGNS SHALL HAVE A 2' MINIMUM CLEARANCE BETWEEN EDGE OF SIGN AND FACE OF CURB.
2. ALL SIGNS SHALL HAVE A 7' MINIMUM VERTICAL CLEARANCE BETWEEN BOTTOM OF SIGN AND THE TOP OF SIDEWALK.
3. ALL PAVEMENT MARKINGS SHALL BE RECESSED WET REFLECTIVE.
4. ALL EXISTING SIGNS WITHIN THE PROJECT LIMITS SHALL BE RETAINED UNLESS OTHERWISE NOTED.
5. ALL PROPOSED CROSSWALKS SHALL HAVE A CLEAR WIDTH OF 8 FEET UNLESS OTHERWISE NOTED. THE CLEAR WIDTH FROM THE BACK OF THE CROSSWALK MARKING TO THE STOP LINE SHALL BE 4 FEET.
6. ALL PROPOSED PARKING RESTRICTION SIGNS SHALL BE MOUNTED AT 45 DEGREE TO THE DIRECTION OF TRAFFIC FLOW.



EXISTING SIGNS ON THIS SHEET

SIGN ID NUMBER	MESSAGE	SIGN ID NUMBER	MESSAGE
D3-102	CONOMO AVE	R10-7	DO NOT BLOCK INTERSECTION
R1-1	STOP	S5-1	SCHOOL SPEED LIMIT 20
R5-1	DO NOT ENTER	S5-2	END SCHOOL ZONE
R6-1L	ONE WAY	W11-2	WALKING AHEAD
R7-5	NO PARKING	W16-9P	AHEAD
R7-107a(436)	NO PARKING		



809254\_I0503N\_PAVEMENT MARKINGS.DWG PLOTTED ON 12-JUN-2023 9:25 AM

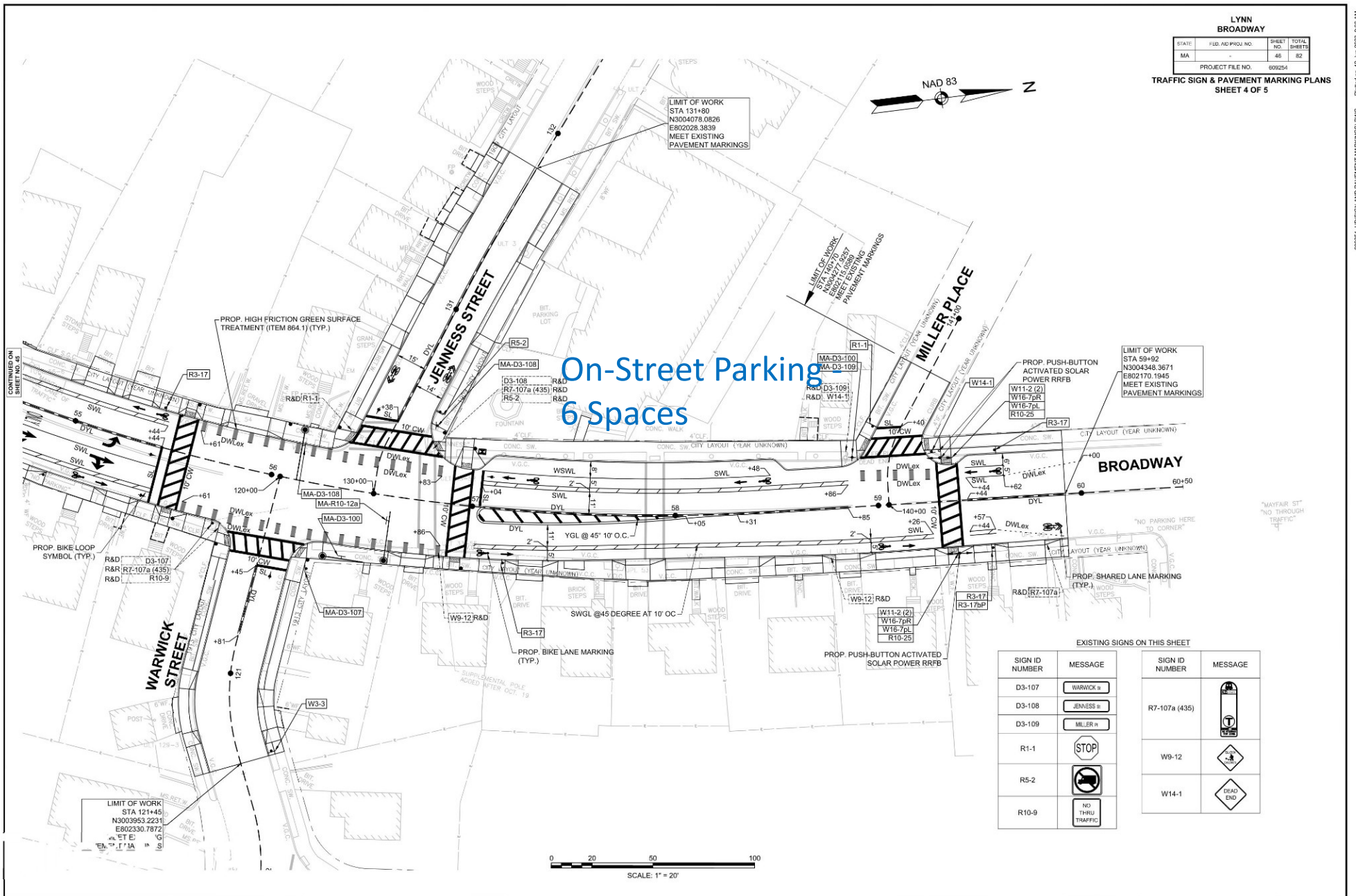
CONTINUED ON SHEET NO. 44







# Current Plan – Sheet 4 of 5



LYNN BROADWAY

STATE	FED. AID PROJ. NO.	SHEET NO.	TOTAL SHEETS
MA	-	46	82
PROJECT FILE NO. 809254			

TRAFFIC SIGN & PAVEMENT MARKING PLANS  
SHEET 4 OF 5

On-Street Parking  
6 Spaces

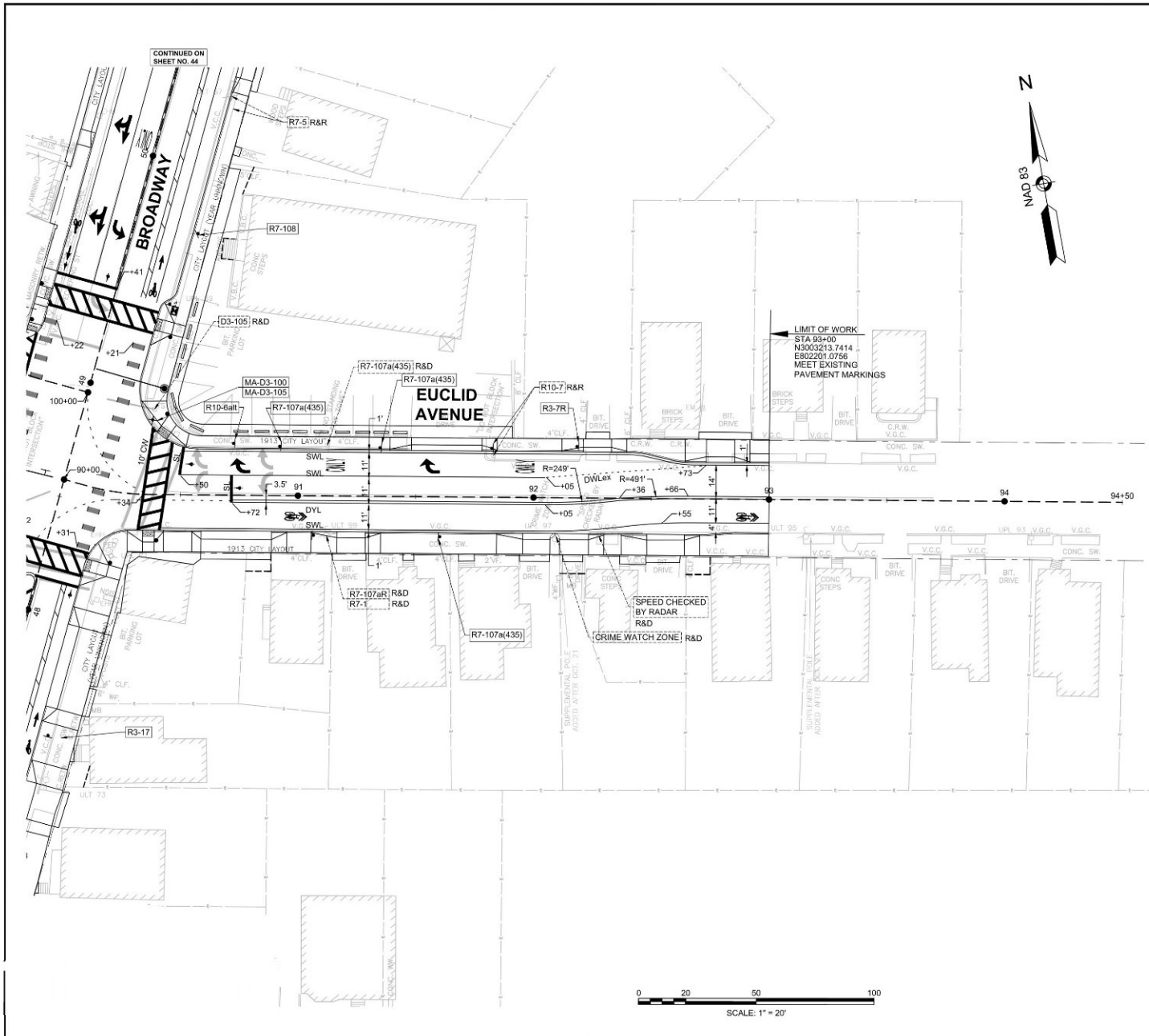
EXISTING SIGNS ON THIS SHEET

SIGN ID NUMBER	MESSAGE	SIGN ID NUMBER	MESSAGE
D3-107	WARWICK #	R7-107a (435)	
D3-108	JENNESS #	W9-12	
D3-109	MILLER #	W14-1	
R1-1	STOP		
R5-2			
R10-9	NO THRU TRAFFIC		

0 20 50 100  
SCALE: 1" = 20'



# Current Plan – Sheet 5 of 5



**LYNN BROADWAY**

STATE:	FED. AID PROJ. NO.:	SHEET NO.:	TOTAL SHEETS:
MA		47	82
PROJECT FILE NO.:		809254	

**TRAFFIC SIGN & PAVEMENT MARKING PLANS**  
SHEET 5 OF 5

EXISTING SIGNS ON THIS SHEET

SIGN ID NUMBER	MESSAGE	SIGN ID NUMBER	MESSAGE
D3-105		R10-7	
R7-1		CRIME WATCH ZONE	
R7-5		SPEED CHECKED BY RADAR	
R7-107aR			
R7-107a(435)			

# Current Cost

- Estimate Construction Cost: \$6 million
- Design & Construction Funded by MassDOT





# Easements Needed

## Two Types:

- Temporary Easements
  - Temporary Easements are needed 5 feet beyond the limit of work.
  - Used for grading, setting concrete forms, worker access, etc.
- Permanent Easements
  - Permanent Easements
  - Needed for any permanent access / maintenance
  - Ex. Overhead wires, guy wires, underground utilities.

# Easements

- Easement Breakdown\*
  - Permanent Easements = 11
    - 1 – Sidewalk Easement
    - 1 – Wall Easement
    - 9 – Utility Easements (aerial encroachments / sidewalk anchors)
  - Temporary Easements = 69
    - Sidewalk reconstruction, driveway / walkway blending, re-establish lawns, installation of tree protection, etc.

\*Summary based on Revision 5 of the Preliminary ROW Plans







# Easements Needed – Example Sidewalk Easement

